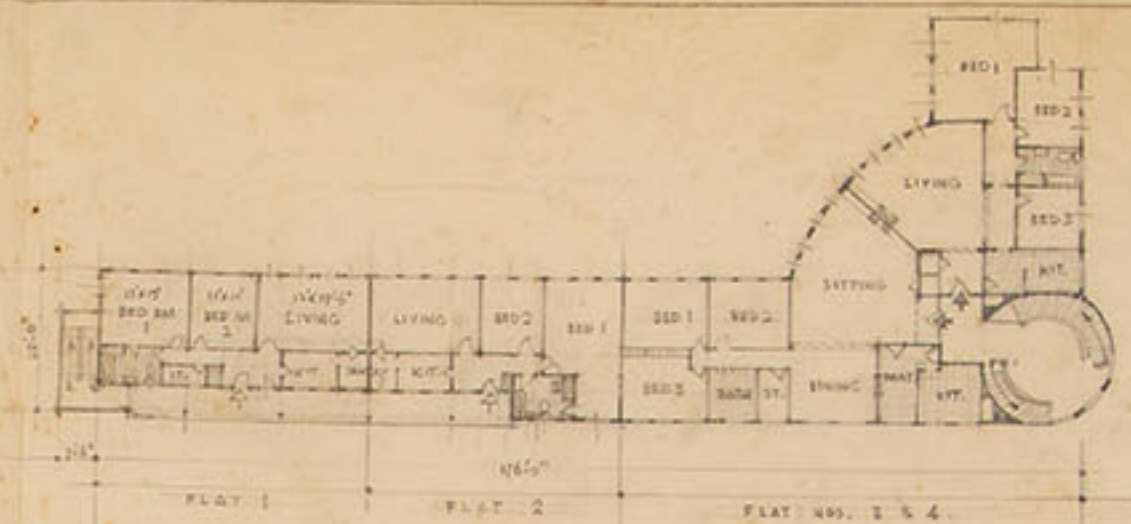
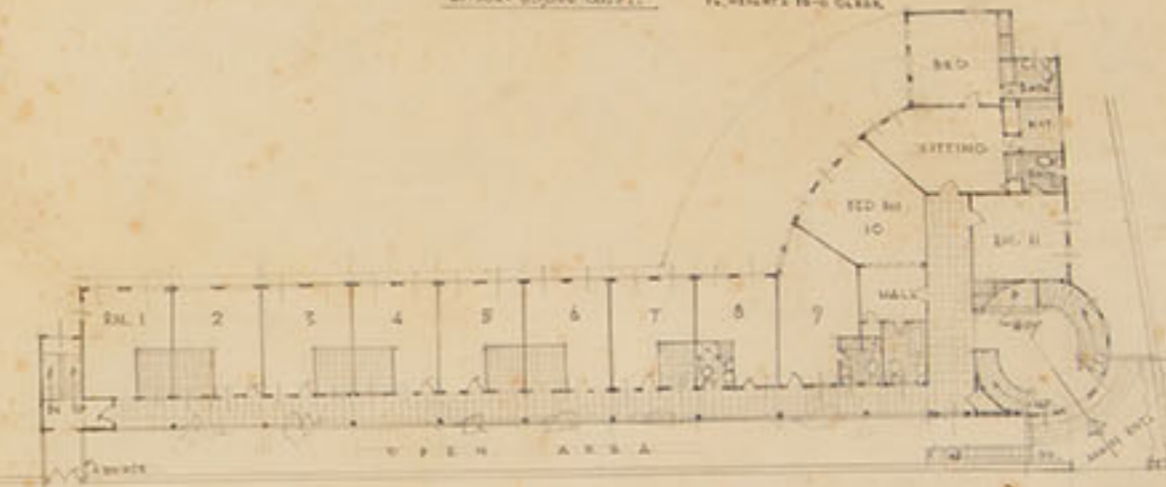


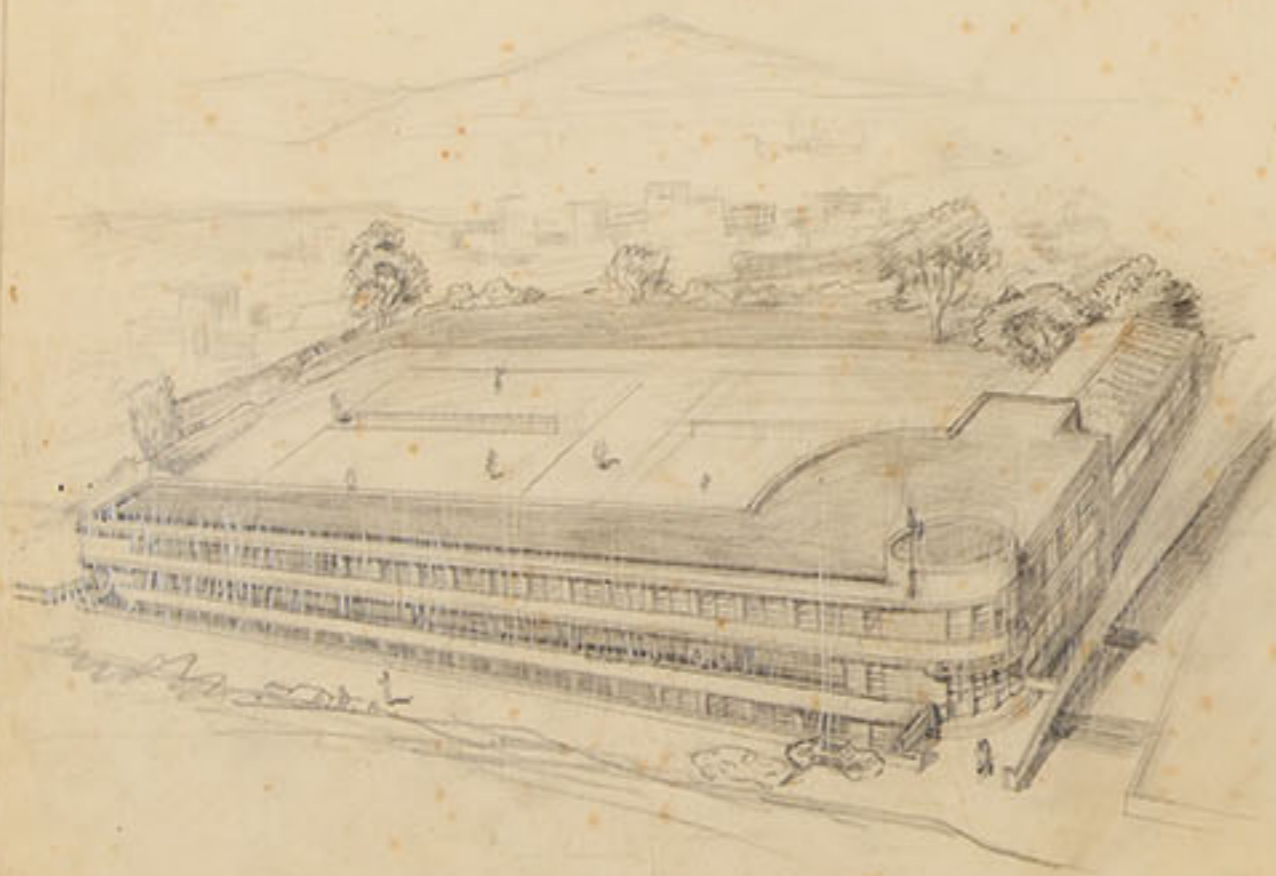
SECOND FLOOR (THREE FLATS)
(ALTERNATIVE SUGGESTION)



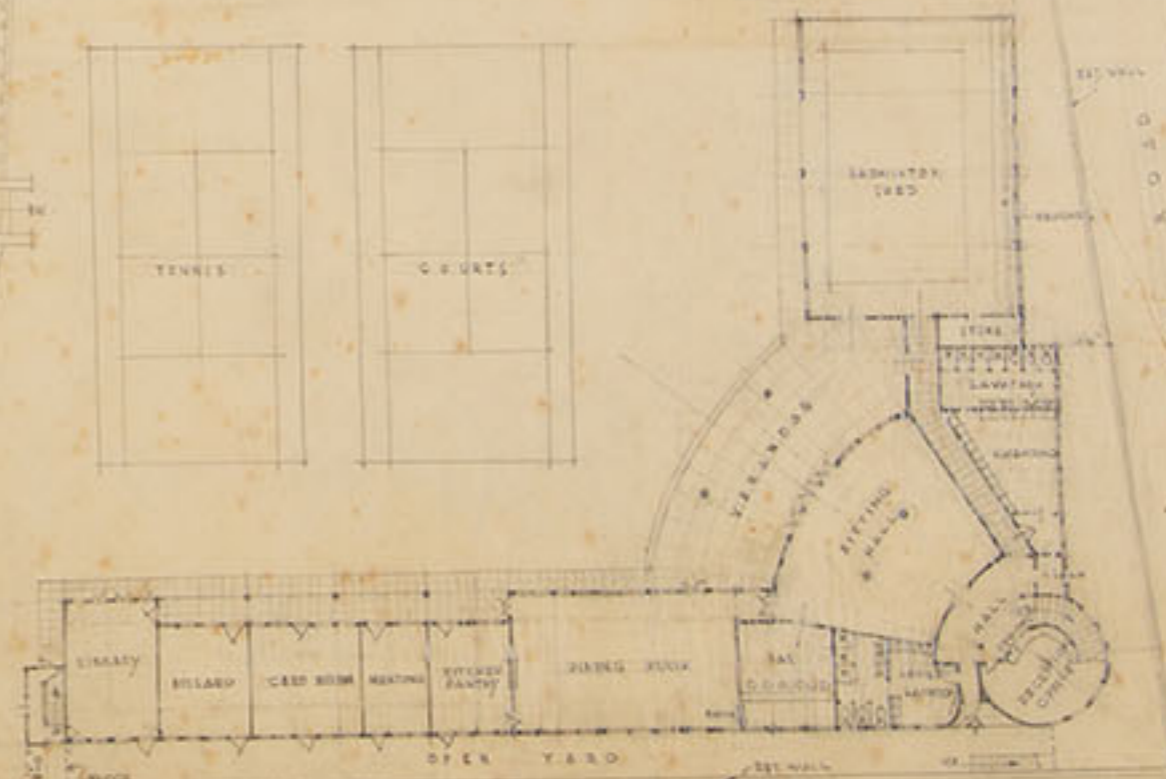
SECOND FLOOR (FOUR FLATS)
APPROX. 68,000 CU. FT. FL. HEIGHT 10'-0" CLEAR



ROBINSON ROAD
FIRST FLOOR (SINGLE ROOMS & 1 FLAT)
APPROX. 62,150 CU. FT. FL. HEIGHT 10'-0" CLEAR



PERSPECTIVE VIEW



ROBINSON ROAD
GROUND FLOOR (CLUB HOUSE)
APPROX. 120,000 CU. FT. REMAINING PART OF 500 FL. & 100,000 CU. FT. (APPROX.)
FL. HEIGHT 12'-0" CLEAR

DESIGNED		16/5/47
DRAWN		
CHECKED		
APPROVED		

SCALE 1/16" = 1" HORIZ.

TENTATIVE PLAN OF PROPOSED CLUB BUILDING ON INLAND LOT No.

ROBINSON ROAD. (3rd SCHEME) 2nd June, 1947

HONG KONG ENGINEERING & CONSTRUCTION Co., LTD.